

MIDDLEWARE

Hardware Station Service: Features:

- Standard HW interface
- Generic interface, applicable for various IMM suppliers
- Interface for adding HW units; Applicable configuration for N units with entering unit IP
- HW unit communication protocol: _____

- Transport order service API - JSON
- Import according to JSON structure
- Transfer via FTP

- Transport order service API - COSTUM
- Transport order Interface API - backend Service
- For FILE exchange



- Enables implementation of X additional stations - path dependant
- Dynamical calling of HW stations - proxy
- Calling of Transport order according to Transport Typ, Cargo Type,...

Linear Buffer entry / exit Buffer unit

- Used for storage of transportation units
- Mechanical podest with integrated conveyour belt of different diemensions
- Servo motor driven
- Simens PLC integrated
- Sensoric for sensing of limit position in the unit

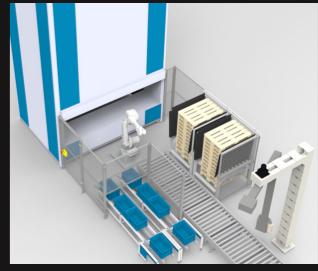
Vertical storage LIFT

- Enables storage for Tranportation units / end product:
- Dimensions of Vertical storage lift: (to be defined according to demands)
- Height: from 5 to 16 m
- With integrated fixation stops for transportation units mounted on trays

Industrial Robot

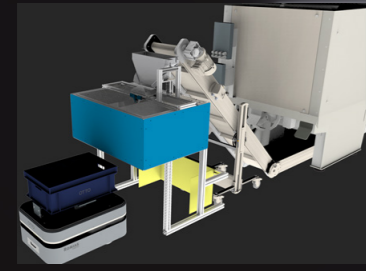
- Enables handling of vertical storage lift:
- from Linear Buffer entry / exit unit
- from docking station
- to pallet for further palletisation steps

- Industrial robot ABB IRB 6700
- Robot gripper
- Linear buffer entry / exit lines



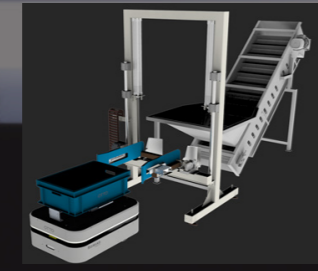
Mecahnical Buffer Chute

- For buffering parts according to:
- Number of parts (for LR version)
- Weight of parts (for W version)
- 2 chambers integrated



Mechanical Drop-off unit

- Used for automatic feeding of assembly lines:
- Mechanical podest with integrated safety elements
- With integrated vertical axis and rotation
- Simens PLC integrated



Transportation unit SDV

- OTTO 100
- OTTO 750/1500
- OTTO LIFTER
- Fast Charger

